

Technical Note - TN1043m

"OSX SoftSynth: Error initializing" error on OSX 10.6 (Snow Leopard)

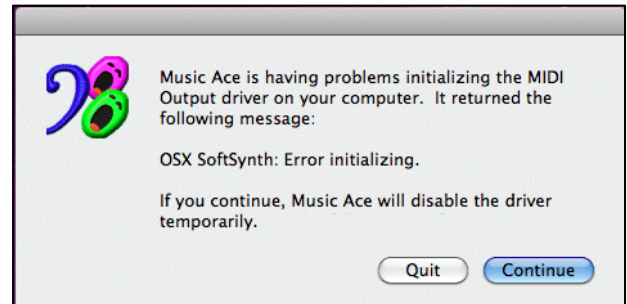
Scope

This technical note applies to V3.0, V3.1, V3.1.3 and V4.0 Music Ace products running on Macintosh computers with OSX 10.6 (Snow Leopard) installed.

Overview

When the Music Ace software is launched you may see the error message shown here.

Music Ace products are able to use either of two sound drivers available on Macintosh computers: (1) OSX Software Synthesizer or (2) QuickTime Music. There is a problem using the OSX Software Synthesizer with OSX 10.6 (Snow Leopard). Switching the sound driver to QuickTime Music solves the problem.



Procedure

1. When the error message appears, click the "Continue" button. The welcome screen will appear briefly followed by the menu screen shown here.
2. Click on "MIDI Output Driver". You will see a screen like the one shown below.
3. Select the QuickTime Music driver by clicking on the circle to the right of QuickTime Music. You will briefly see an initialization message and the QuickTime driver will then show as selected.
4. Click "OK" followed by "Return to Main Menu"
5. You will now be able to operate your Music Ace product using the QuickTime Music driver.

